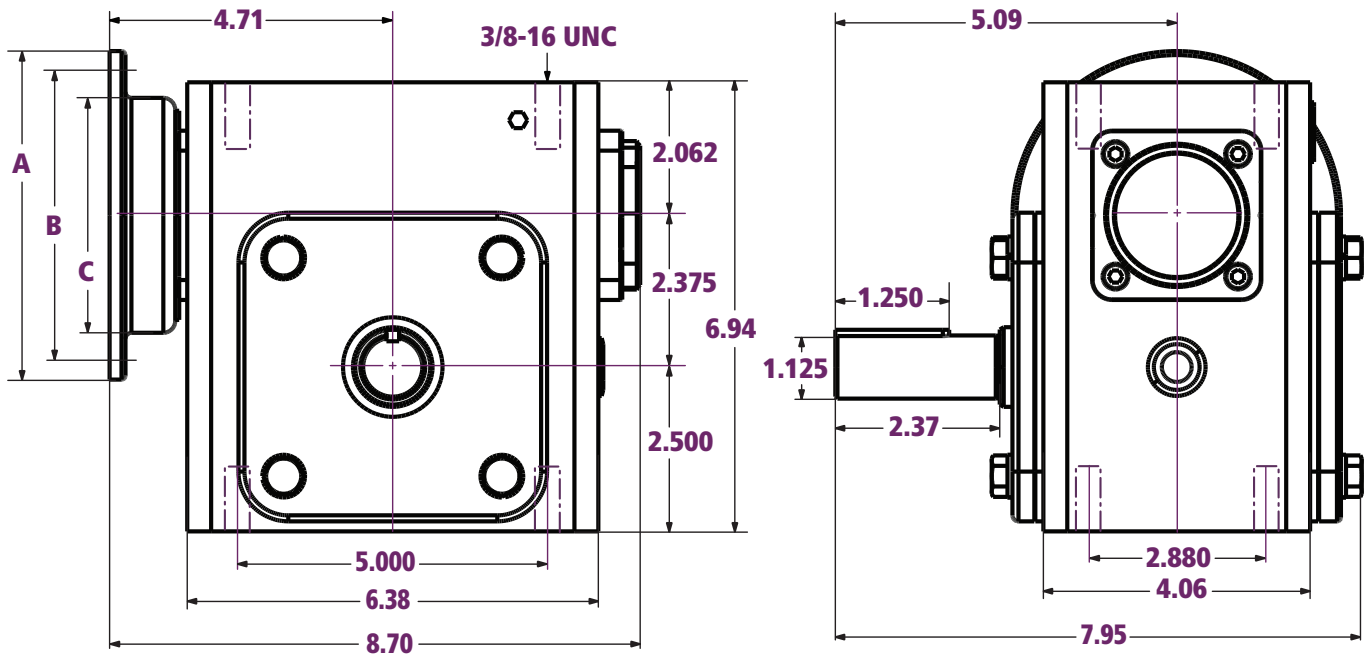




# X237 Dimensions

All dimensions listed in inches



## Motor Options & Dimensions (in)

NEMA Frame	Motor Shaft Dia. (in)	A	B	C
		OD Flange	Bolt Circle	Pilot Bore
56C	0.625	6.50	5.88	4.5
140TC	0.875			

## Ratios

Nominal Ratios	Exact Ratios
5:1	5.3:1
10:1	10.3:1
15:1	15.5:1
20:1	19.5:1
30:1	30.0:1
40:1	40.0:1
50:1	50.0:1
60:1	60.0:1

## Efficiency

Nominal Ratios	Efficiency (%)
5:1	≈ 93
10:1	≈ 89
15:1	≈ 84
20:1	≈ 82
30:1	≈ 76
40:1	≈ 71
50:1	≈ 64
60:1	≈ 61

## Specifications

Center Distance (in)	Weight (lbs)	Est. Oil Fill Amount* (oz)
2.375	37.4 [38.5 <sup>†</sup> ]	22.0

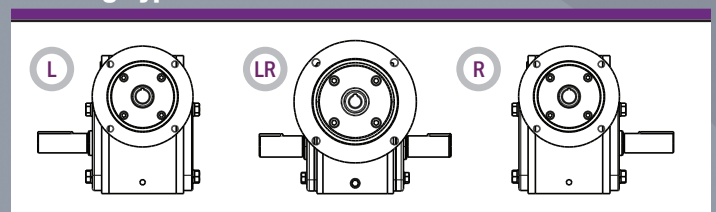
\*For Position 1

<sup>†</sup>Approximate weight for LR Handing

## Output Shaft

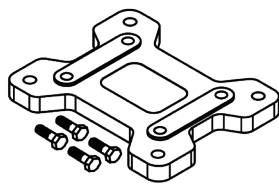
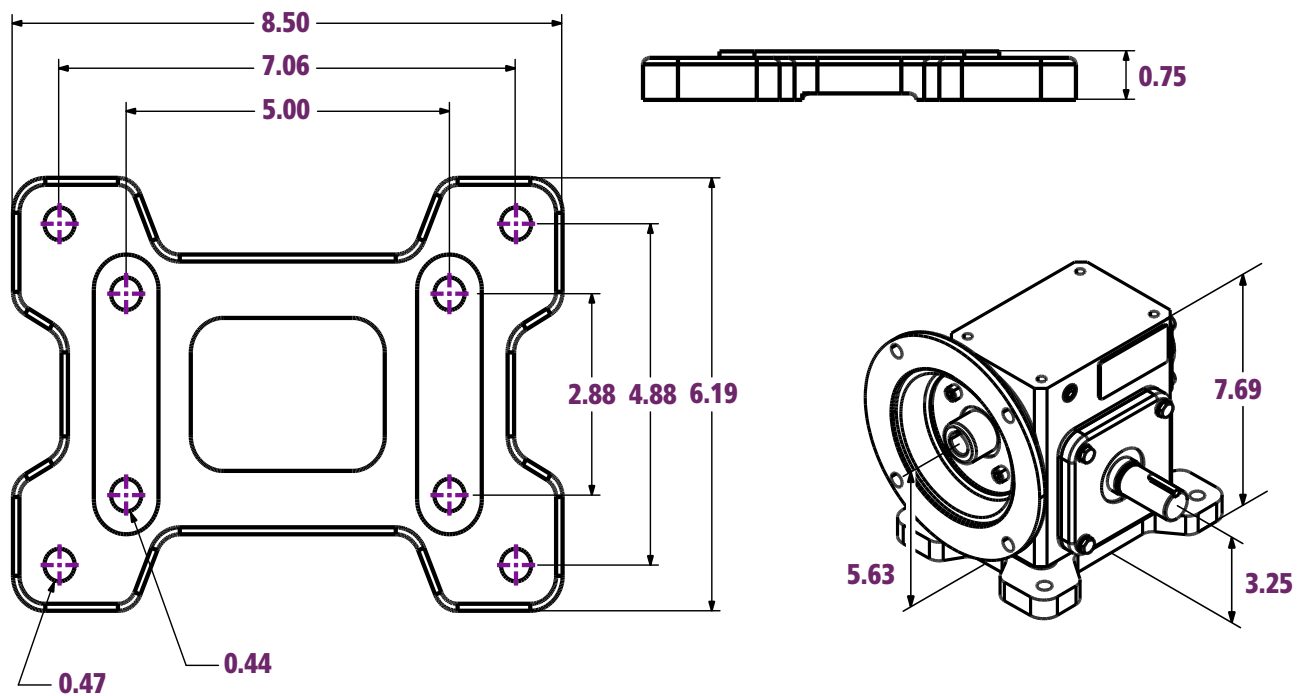
Output Shaft (in)	Output Keyway (in)
1.125	1/4 x 1/8

## Handing Types



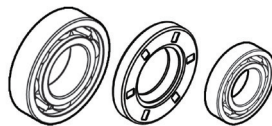
# X237 Accessories

## and X237 Base Kit Dimensions



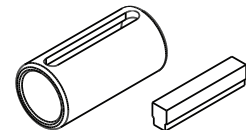
**Foot Mounted Base Kit**

XBK237



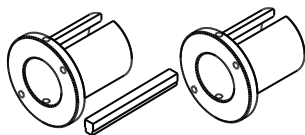
**Component Repair Kit**

XRK237



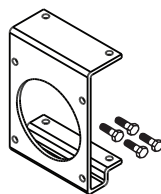
**Input Quill Adapter Option**

X140-56



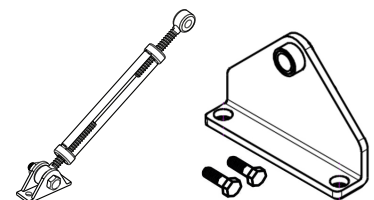
**Output Bushing Kits\***

Not Applicable



**Output Bracket Kit\***

XOB237



**Torque Arm Kit\***

XTA237

\*Made to order.